

Smart Switches  
for the modern Interiors...



## Rider Showcase

Smartness is inherent, Style is born!

For nearly two decades, Anchor's Rider range of switches and accessories have occupied a place in the best of modern homes. Slim Modular Design, attractive combination of Rego and Regency plates, is simply designed for those who foster a desire for the best. The range boasts a trendy modular look and is manufactured in Anchor's ISO 9001-2008 certified facilities at Haridwar and Daman.

The single mounting Rego plates with smooth curved looks are virtually dust free with glossy white finish. The classic modular look adds an exemplary appeal to your favorite space interiors. The Regency plates with a base frame are the easiest to mount on the wall boxes to make the perfect modular fit with slim accessories for the modern homes.

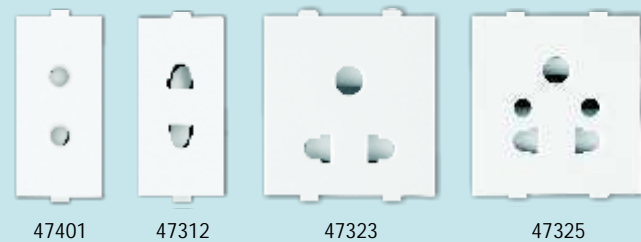
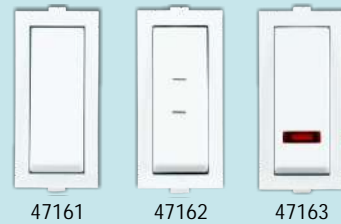
Along with the smart looks, total value for money is also delivered through accompanying accessories such as sockets with child-locks, ISI certified switches and also a complete hospitality range of products to suit the needs of budget hotels and hospitals offering optimum comfort.

Ride Smart & Safe with Rider-Smart Switches for the Modern Interiors!





# SWITCHES



Code Description MRP Pkd.

## Slim Switches HSN Code :8536 6A, 240V~

47101	1 Way Switch	31/-	20
47102	2 Way Switch	53/-	10
47103	1 Way Switch with indicator	53/-	10
47104	Bell Push Switch	55/-	10
47105	Bell Push Switch with indicator	61/-	10

## Mega Switches HSN Code :8536 6A, 240V~

47201	1 Way Switch	59/-	10
47202	2 Way Switch	70/-	10
47203	1 Way Switch with indicator	70/-	10
47204	Bell Push Switch	67/-	10
47205	Bell Push Switch with indicator	81/-	10

## Slim Switches HSN Code :8536 16A, 240V~

47161	1 Way Switch	67/-	10
47162	2 Way Switch	74/-	10
47163	1 Way Switch with indicator	74/-	10

## Mega Switches HSN Code :8536 16A, 240V~

47261	1 Way Switch	81/-	10
47262	2 Way Switch	89/-	10
47263	1 Way Switch with indicator	89/-	10

## Power Switches 240V~ S.P. & D.P. HSN Code :8536

47125	25A S.P. Slim 1 Way Switch with indicator	92/-	10
47132	32A D.P. Mega 1 Way Switch (Main Switch with Neon)	125/-	10

## Motor Starter Switches Single Phase 240V~ HSN Code :8536

47420	20A Starter Switch	248/-	5
47425	25A Starter Switch	248/-	5

# SOCKETS

## Socket outlet with safety shutter 10A HSN Code :8536

47401	2 Pin Round Socket	55/-	10
47312	Uro 2 Pin Socket	55/-	10
47323	Uni Socket for 3Pin & 2Pin	67/-	10
47325	Multi Socket for 3Pin & 2Pin (Ideal for cell Phone charger)	77/-	10

\*16A, 20A, 25A switch not suggested for geyser load. Instead motor starter must be used

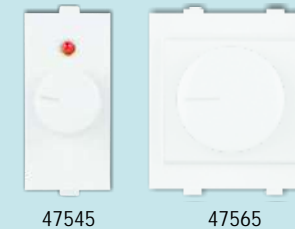
Code Description MRP Pkd.

## Power Sockets HSN Code :8536

47366	Twin Socket 20 & 10A Heavy Duty Tested on 25 A	116/-	10
47363	Combi Socket for all Pins, 6/10/13A	116/-	10
47367	16A 3 Pin Socket Heavy Duty Tested on 25 A	116/-	10



# FAN REGULATORS & DIMMERS



47513	Fan Step Regulator Tiny 100W 240V~ 50Hz EME	243/-	10
47500	Fan Step Regulator Mega 100W 240V~ 50Hz EME	281/-	5

47545	Dimmer Single Tiny 450W	154/-	10
47565	Dimmer Mega 650W	240/-	5

(For incandescent lamp)

# SUPPORT MODULE



## Telephone Outlet & Connector/Tel. Modem Jack RJ 11 HSN Code :8536

47611	RJ 11 Tel. Jack single with shutter	62/-	10
47622	RJ 11 Tel. Jack double w/o shutter	71/-	10

## Computer Modem Jack / Cord outlet & TV. Socket HSN Code :8536

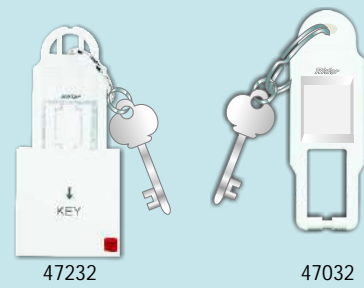
47644	RJ 45 Modem Jack for computer with shutter	104/-	10
47655	Cat 5 frame only suitable for Avaya Lucent (AT&T)	71/-	10
47666	Cord outlet with grip	45/-	10
47677	TV. Socket outlet	59/-	10

## Support Modules

47681	Fuse for 16 or 10A, HSN Code:8536	62/-	10
47682	Neon indicator Red HSN Code:8531	50/-	10
47683	Bell Indicator HSN Code:8536	127/-	10
47684	Blank Plate Single HSN Code:8538	14/-	26
47685	Blank Plate Double HSN Code:8538	24/-	20



## HOSPITALITY RANGE



Code Description MRP Pkd.

### Hotel Room Services HSN Code :8536 240V~

47232	32A D.P. Main Switch operating with key tag	290/-	5
47032	Only Key Tag with Key Ring	49/-	10

### Down Light 4Module / Buzzer 240V~

47296	Down Light front Grill with flush metal box arranged with lamp holder HSN Code :8538	222/-	1
47286	Buzzer HSN Code :8531	72/-	5

## PLATES

Rego®



### Single Mounting Plate HSN Code :8538

48101	1 Module	28/-	10
48102	2 Module	28/-	10
48103	3 Module	38/-	10
48104	4 Module	43/-	10
48106	6 Module	65/-	10
48108	8 Module	80/-	5
48110	8 Module-Horizontal	80/-	10
48112	12 Module	104/-	5

Regency®



### Front Plates with Base Frame HSN Code :8538

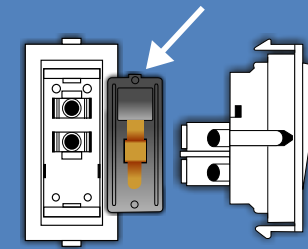
48201	1 Module	40/-	10
48202	2 Module	40/-	10
48203	3 Module	58/-	10
48204	4 Module	66/-	10
48206	6 Module	96/-	10
48208	8 Module	126/-	5
48210	8 Module-Horizontal	126/-	10
48212	12 Module-Horizontal	152/-	5
48216	16 Module-Horizontal	161/-	5
48214	18 Module-Horizontal	170/-	5

\*Do not use "Hard Cleaning Agent" for cleaning purpose

## PLATES - DIMENSIONS

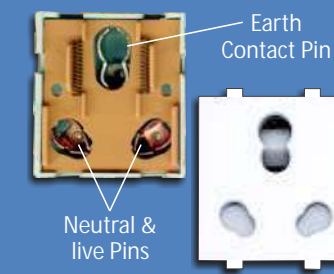
REGO - Single Mounting Plate										
MODULE	1M	2M	3M	4M	6M	8M	8M - H	12M - H	—	—
CODE	48101	48102	48103	48104	48106	48108	48110	48112	—	—
W x H	86 x 86	86 x 86	116 x 86	146 x 86	220 x 86	146 x 154	249 x 86	215 x 153	—	—
REGENCY - Front Plates with Base Frame										
MODULE	1M	2M	3M	4M	6M	8M	8M - H	12M - H	16M - H	18M - H
CODE	48201	48202	48203	48204	48206	48208	48210	48212	48216	48214
W x H	94 x 90	94 x 90	118 x 90	151 x 90	220 x 90	151 x 154	262 x 90	220 x 154	262 x 154	220 x 210

Switches with  
**Arc Shield**



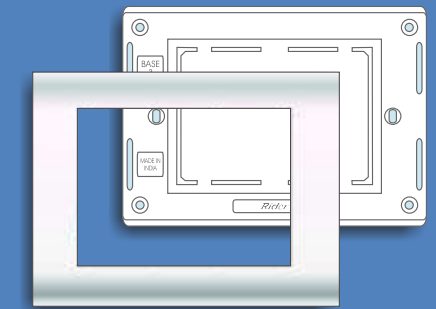
Safety of Operation ensured with Arc Shield while the Sleek & Stylish look complements the aesthetic appeal of the modern space interiors.

Sockets



Rider uses the inherent elastic properties of phosphor bronze with state-of-the-art design to provide the ultimate complete action contact sockets.

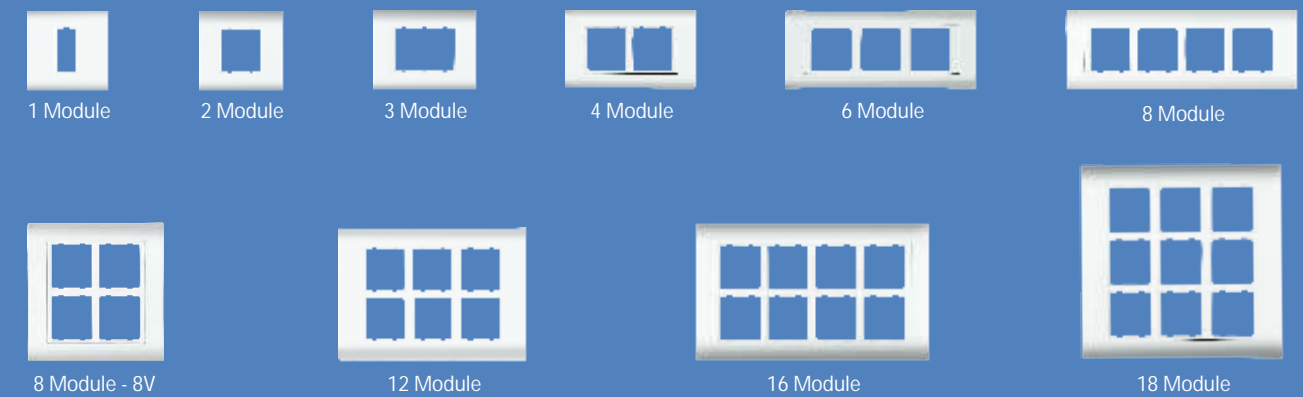
REGD. DESIGN



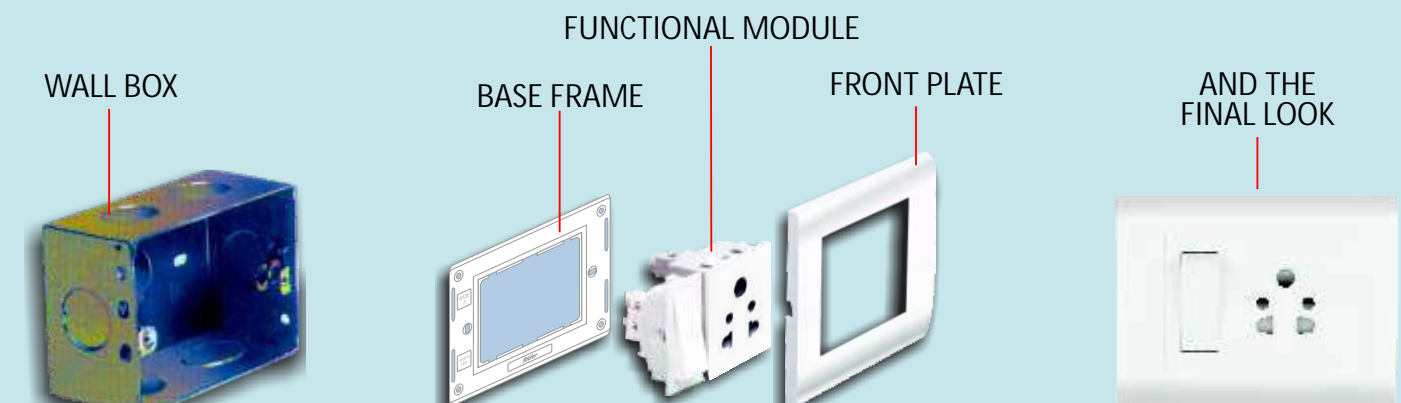
COMBINATION OF *Regency* FRONT PLATE WITH BASE FRAME

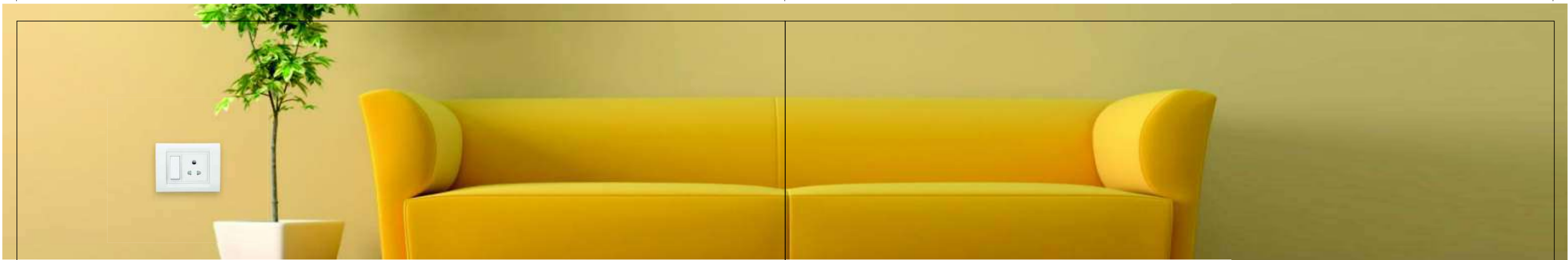
Rider is a world class range of wiring devices and accessories, unique in design and technology. Seamless Research & Development enables Rider Wiring Devices Range to be class-apart with its products meeting the international quality standards & offering ultimate value for money.

### REGENCY (FRONT PLATE + BASE FRAME)



The plate unit is assembled by fixing functional modules to the base frame which is mounted on the wall boxes. The assembly is then covered with a front plate.





### Concealed Galvanised Metal Boxes



#### Metal Boxes

- Rust Protected 120 GSM GI BOXES
- Very long service life
- Good quality threads
- Tested as per IS
- Earthing terminal to avoid shock

Code	Module	Size(mm)	Depth(mm)	HSN Code	MRP ₹/ Unit	Pkd
<b>CONCEALED GI SHEET METAL BOXES (20 Gauge)</b>						
Concealed Galvanised mounting boxes (Rust Protected)						
21780	1 or 2 Module	79 x 75	46	8538	41/-	10
21452	3 Module	79 x 99	46	8538	56/-	10
21791	4 Module	79 x 135	52	8538	69/-	10
21463	6 Module	79 x 207	52	8538	93/-	10
30453	8 or 9 Module Horizontal	79 x 230	52	8538	121/-	5
21474	8 Module Rectangular	132 x 135	56	8538	121/-	5
21485	12 Module	132 x 207	56	8538	149/-	5
21736	16 Module	142 x 230	56	8538	161/-	5
21758	18 Module	207 x 207	60	8538	176/-	5
<b>CONCEALED GI SHEET METAL BOXES (18 Gauge)</b>						
Concealed Galvanised mounting boxes (Rust Protected)						
35 640	1 or 2 Module	79 x 75	46	8538	50/-	10
35 650	3 Module	79 x 99	46	8538	71/-	10
35 661	4 Module	79 x 135	52	8538	86/-	10
35 672	6 Module	79 x 207	52	8538	115/-	10
35 683	8 or 9 Module Horizontal	79 x 230	52	8538	151/-	5
35 394	8 Module Rectangular	132 x 135	56	8538	151/-	5
35 708	12 Module	132 x 207	56	8538	186/-	5
35 719	16 Module	142 x 230	56	8538	200/-	5
35 720	18 Module	207 x 207	60	8538	220/-	5
<b>CONCEALED GI SHEET METAL BOXES (16 Gauge)</b>						
Concealed Galvanised mounting boxes						
35785	1 or 2 Module	79 x 75	46	8538	74/-	10
35796	3 Module	79 x 99	46	8538	88/-	10
35800	4 Module	79 x 135	52	8538	114/-	10
35810	6 Module	79 x 207	52	8538	154/-	10
35832	8 or 9 Module Horizontal	79 x 230	52	8538	172/-	5
35821	8 Module Rectangular	132 x 135	56	8538	172/-	5
35843	12 Module	132 x 207	56	8538	219/-	5
35854	16 Module	142 x 230	56	8538	253/-	5
35865	18 Module	207 x 207	60	8538	304/-	5

**NEW**

### Concealed Stainless Steel Boxes



### Concealed Mounting Boxes



#### Plastic Boxes

- High quality boxes made with High impact plastics
- Metal thread inserts

Code	Module	Size(mm)	Depth(mm)	HSN Code	MRP ₹/ Unit	Pkd
<b>STAINLESS STEEL METAL BOXES</b>						
36001	1 or 2 Module	79 x 75	46	8538	231/-	10
36002	3 Module	79 x 99	46	8538	266/-	10
36003	4 Module	79 x 135	52	8538	342/-	10
36004	6 Module	79 x 207	52	8538	457/-	10
36006	8 or 9 Module Horizontal	79 x 230	52	8538	538/-	5
36005	8 Module Rectangular	132 x 135	56	8538	538/-	5
36007	12 Module	132 x 207	56	8538	665/-	5
36008	16 Module	142 x 230	56	8538	751/-	5
36009	18 Module	207 x 207	60	8538	908/-	5
<b>SURFACE PLASTIC BOXES</b>						
21281	1 or 2 Module	85 x 85	40	8538	41/-	10
20449	3 Module	85 x 115	48	8538	51/-	10
21292	4 Module	85 x 145	48	8538	57/-	10
30511	6 Module	85 x 219	40	8538	74/-	10
30704	8 or 9 Module Horizontal	85 x 248	40	8538	105/-	5
20450	8 Module Rectangular	152 x 145	40	8538	105/-	5
20347	12 Module	153 x 214	40	8538	132/-	5
34567	16 Module	153 x 259	40	8538	141/-	5
<small>*Not suitable for Woods - (Matrix, Stella Plate), Vision &amp; Roma Plates</small>						
<b>CONCEALED PLASTIC BOXES</b>						
21 237	1 or 2 Module	78 x 78	45	8538	31/-	10
21 306	3 Module	75 x 103	52	8538	37/-	10
21 248	4 Module	76 x 136	46	8538	50/-	10
21 259	6 Module	76 x 205	50	8538	74/-	10
30 475	8 or 9 Module Horizontal	78 x 229	50	8538	97/-	5
21 260	8 Module Rectangular	135 x 133	51	8538	97/-	5
21 270	12 Module	135 x 206	51	8538	121/-	5
21 408	18 Module	204 x 207	51	8538	154/-	5